



Sevilla.



McDonald Jones  
FIND YOURSELF AT HOME



# Sevilla.

---

## Designed for pure enjoyment.

Superb architectural design combines with stunning contemporary lifestyle elements to create a unique and aspirational home that you and your family will adore for years to come.

This design demonstrates that you can create your dream home no matter what size your block, offering the modern comforts we all desire such as light-filled, open spaces that are sure to become the perfect setting for relaxing with your loved ones.

The smartly designed Sevilla offers numerous spaces for connecting, entertaining and unwinding across two stunning levels with enviable comfort, privacy and flexibility to adapt to your changing needs.

The lower level features the centrally located gourmet kitchen, with incredible walk-in pantry, which looks out over the wide, light-filled open plan living and dining that effortlessly opens to the alfresco to enjoy the beautiful breezes all year round.

The upper level is dedicated to rest and relaxation, ideally designed offering each member of the family their very own space within this peaceful and private home.

You will adore the tranquil master suite with a luxurious ensuite and stylishly designed wall-to-wall walk-in robe offering you resort-style arrangement of your private space. This serene and calm space will be the perfect setting for you to retreat to at the end of each day.

The Sevilla has a number of variations so you can select the ideal home for your block, ensuring your dream home is realised offering you endless enjoyment and flexibility to adapt and enable you to create your perfect home no matter your life stage.





# Sevilla 32.

				
4	2	2	1	2

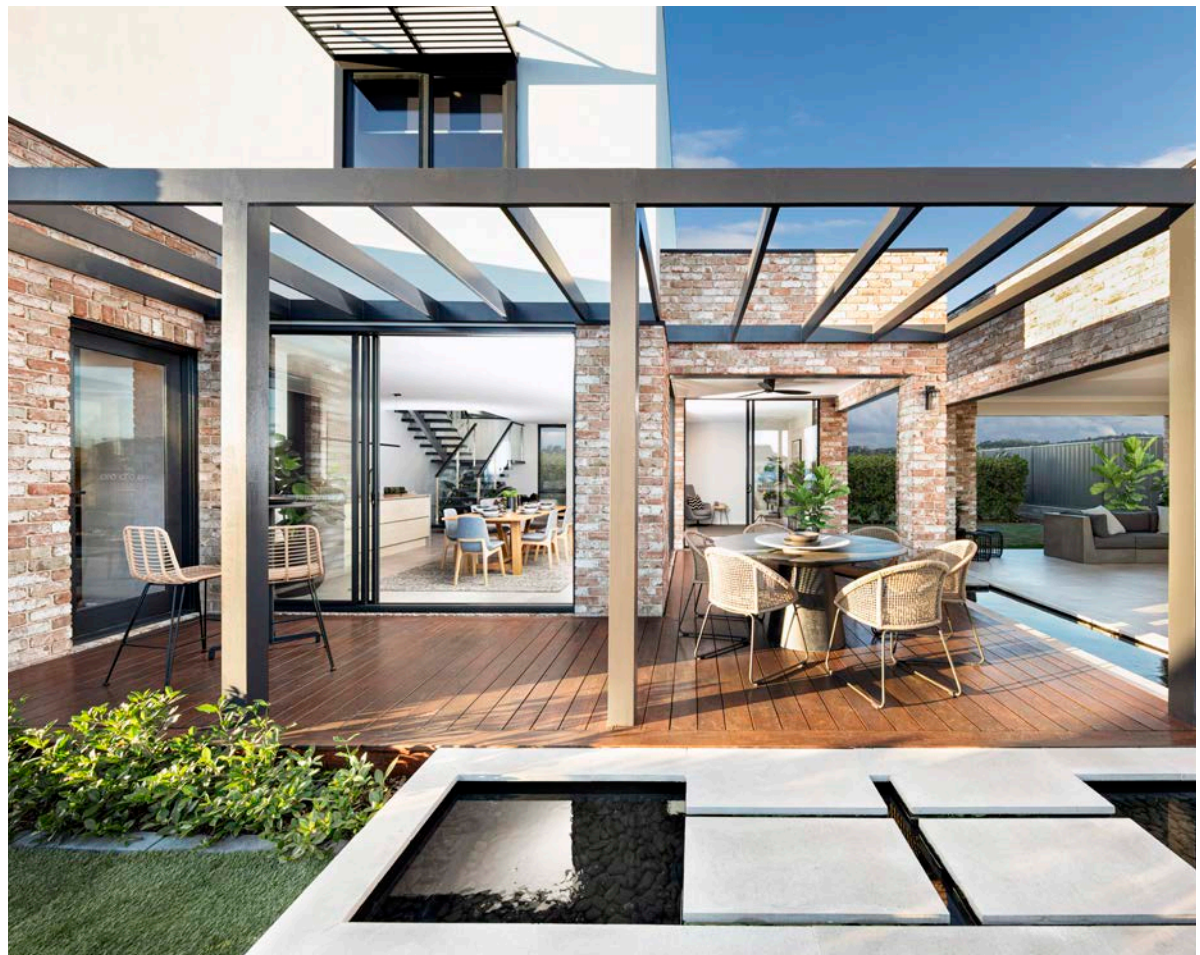
←→ 10.910m width x 19.340m length

## Ground Floor

Family/Living	4.6 x 5.2
Dining	3.9 x 4.2
Home Theatre	3.4 x 4.6
Games Room	3.7 x 3.2
Study Nook	3.1 x 1.8
Double Garage	5.5 x 5.6
Alfresco Cabana	3.3 x 3.3

## First Floor

Master Suite	3.5 x 4.0
Bed 2	3.5 x 3.4
Bed 3	3.2 x 3.4
Bed 4	3.1 x 3.1
Children's Activity	4.9 x 3.0



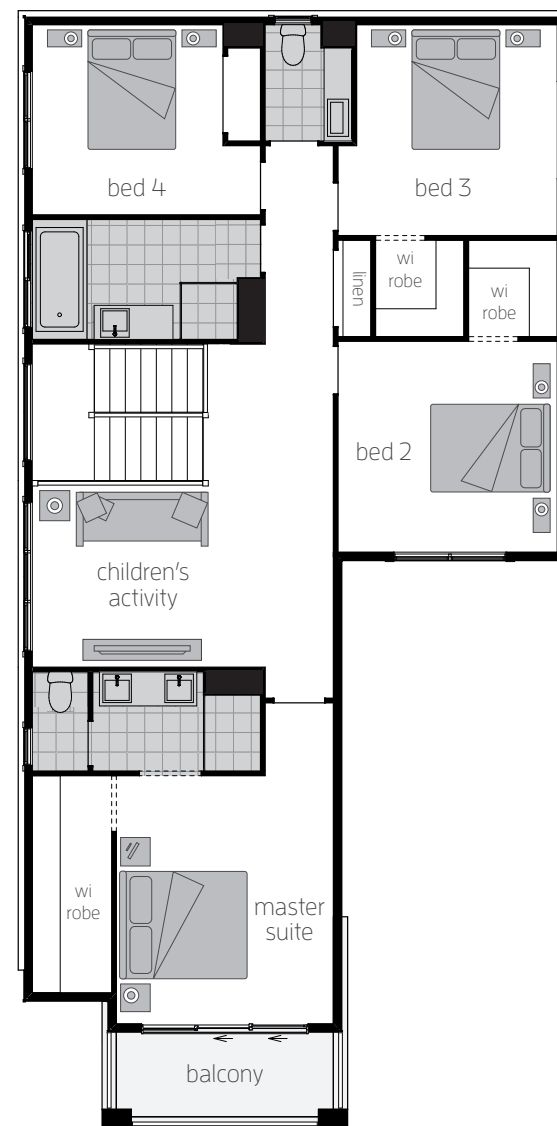
Floor plan depicts **Hampton C facade**.

Floor plans will differ slightly depending on the facade chosen. For example, window locations may differ with different facades.

**Please note:** the sizes of windows and external doors shown may vary from the standard plans due to the new 7 star BASIX requirements and the region in which you build.



GROUND FLOOR



FIRST FLOOR

# Sevilla 32.

## OPTIONS TO CONSIDER:



10.910m width x 19.340m length

### Ground Floor

Family/Living	4.6 x 5.2
Dining	3.9 x 4.2
Guest Bed	3.4 x 3.6
Games Room	3.7 x 3.2
Double Garage	5.5 x 5.6
Alfresco Cabana	3.3 x 3.3

### First Floor

Master Suite	3.5 x 4.0
Bed 2	3.5 x 3.4
Bed 3	3.2 x 3.4
Bed 4	3.1 x 3.1
Bed 5	3.1 x 2.9

### Ground Floor

Alfresco cabana 3.3m x 3.3m

Alternate kitchen layout based on homeworld marsden park display (not shown)

Alternate kitchen layout with two appliance towers

Bi-fold door to dining side and rear wall  
And games room

Butler's pantry

Guest bed with ensuite and walk in robe in lieu of home theatre and powder room

Laundry bench and overhead cupboards

Open staircase

Stacker door in lieu of window to dining (not shown)

### First Floor

Bed 5 3.1 X 2.9 In lieu of children's activity

Freestanding bath to bathroom (not shown)

Floor plan depicts **Hampton C facade**.

Floor plans will differ slightly depending on the facade chosen. For example, window locations may differ with different facades.

**Please note:** the sizes of windows and external doors shown may vary from the standard plans due to the new 7 star BASIX requirements and the region in which you build.



GROUND FLOOR



FIRST FLOOR

# Sevilla 30.

Discover more  
floorplan alternatives  
for this design.

View the  
**OPTIONS TO CONSIDER**  
on our website here.



Chat with our Building & Design Consultants  
to find out more.

				
4	2	2	1	2

10.910m width x 18.790m length

## Ground Floor

Family/Living	4.6 x 5.0
Dining	3.9 x 4.0
Home Theatre	3.4 x 4.2
Games Room	3.7 x 3.4
Double Garage	5.5 x 5.6
Alfresco Cabana	3.3 x 3.4

## First Floor

Master Suite	3.5 x 4.5
Bed 2	3.5 x 3.0
Bed 3	3.5 x 3.0
Bed 4	3.3 x 3.3
Study Nook	1.9 x 1.6

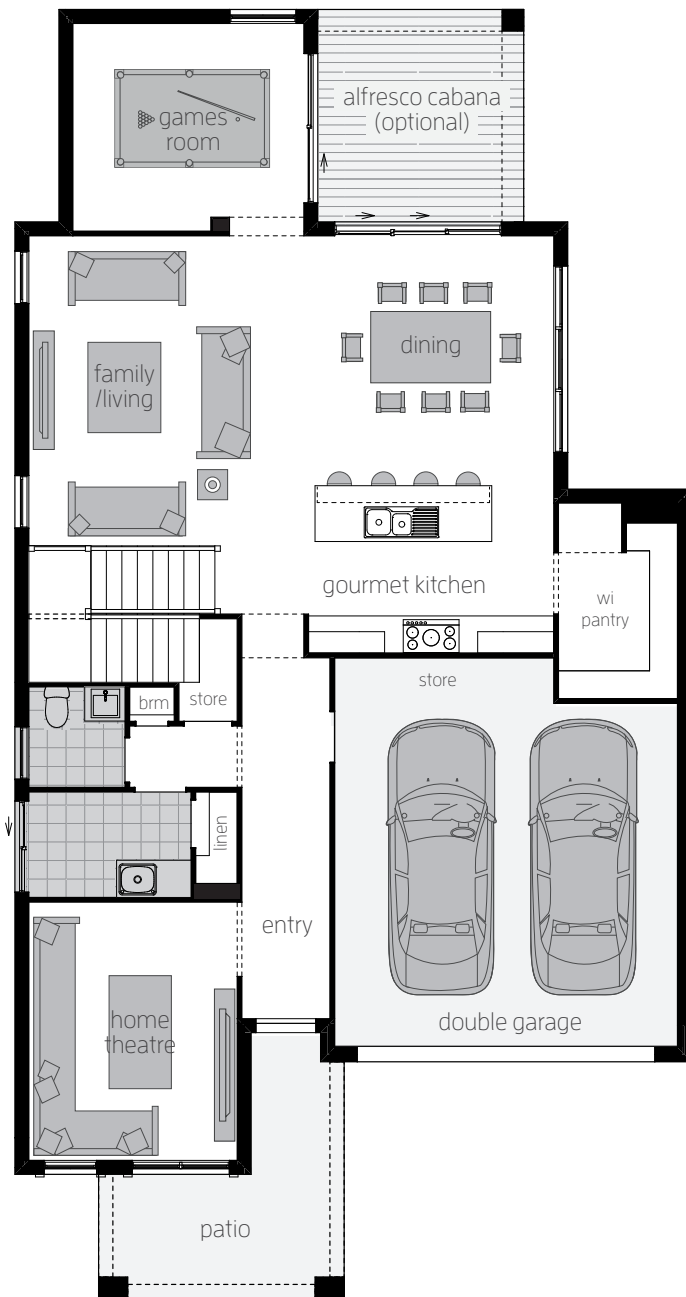


Floor plan depicts **Hampton C facade**.

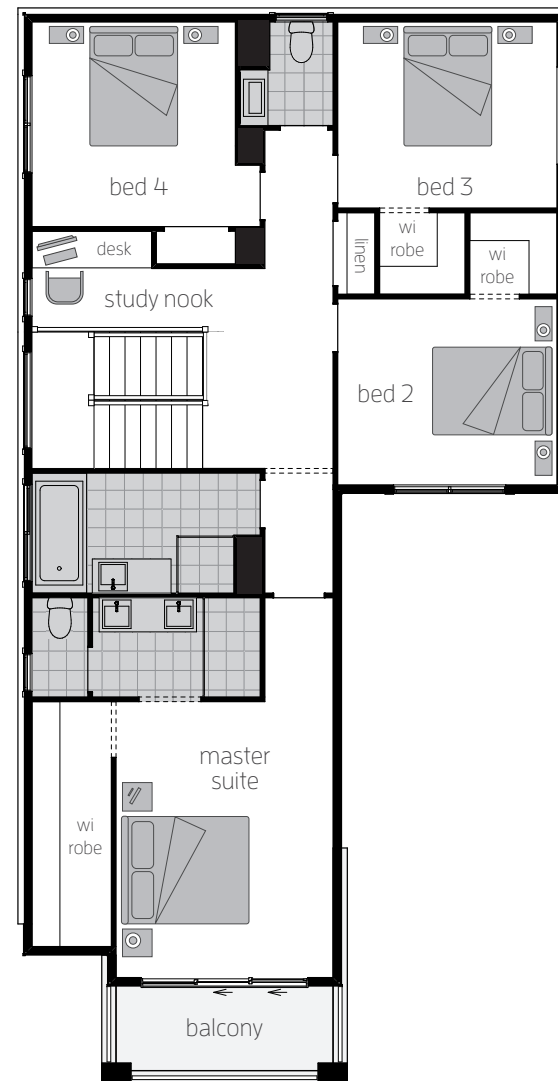
Floor plans will differ slightly depending on the facade chosen. For example, window locations may differ with different facades.

**Please note:** the sizes of windows and external doors shown may vary from the standard plans due to the new 7 star BASIX requirements and the region in which you build.





GROUND FLOOR



FIRST FLOOR

# Sevilla 28.

Discover more  
floorplan alternatives  
for this design.

View the  
**OPTIONS TO CONSIDER**  
on our website here.



Chat with our Building & Design Consultants  
to find out more.

			
4	2	2	2

10.910m width x 17.500m length

## Ground Floor

Family/Living/Dining	8.5 x 4.3
Games Room	3.9 x 2.7
Home Theatre	3.4 x 4.2
Double Garage	5.5 x 5.7
Alfresco Cabana	3.1 x 3.0

## First Floor

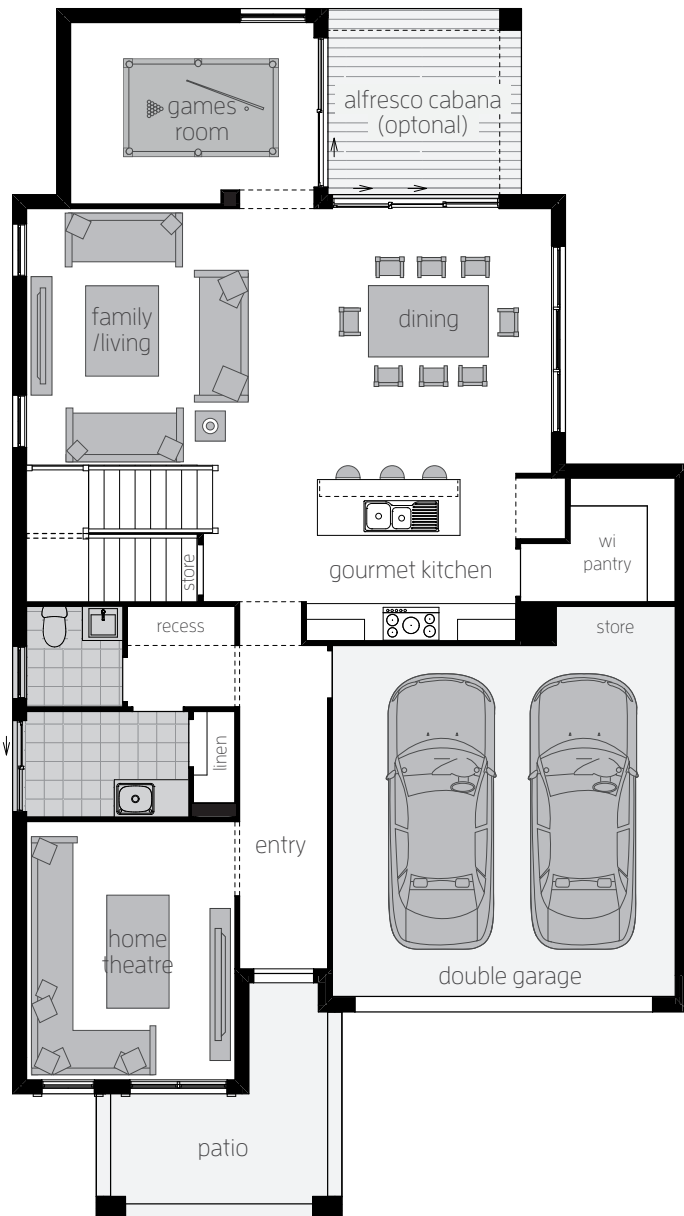
Master Suite	3.5 x 4.5
Bed 2	3.5 x 3.3
Bed 3	3.2 x 3.0
Bed 4	3.0 x 3.5



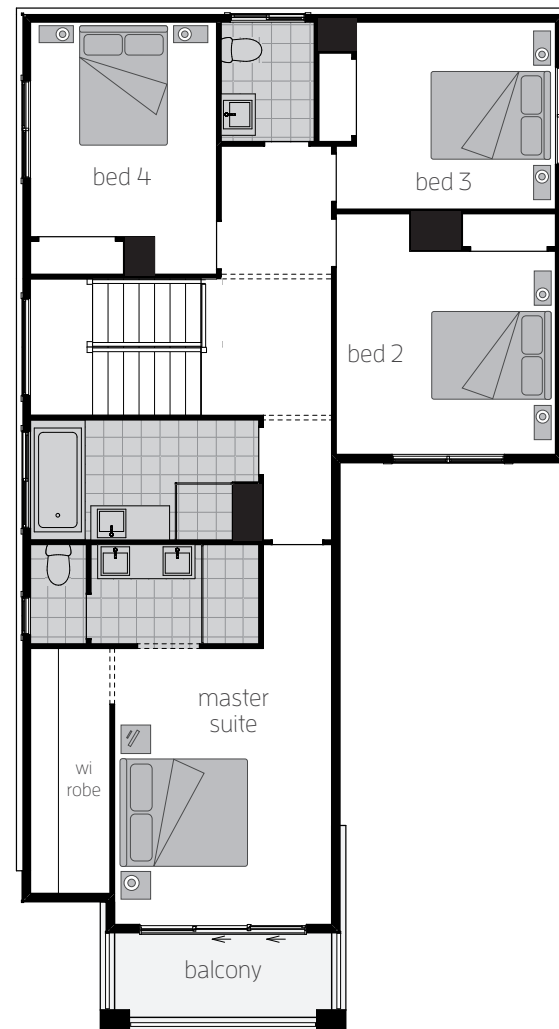
Floor plan depicts **Hampton C facade**.

Floor plans will differ slightly depending on the facade chosen. For example, window locations may differ with different facades.

**Please note:** the sizes of windows and external doors shown may vary from the standard plans due to the new 7 star BASIX requirements and the region in which you build.



GROUND FLOOR

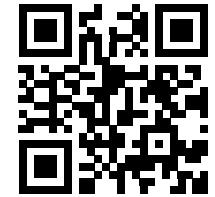


FIRST FLOOR

# Sevilla 26.

Discover more  
floorplan alternatives  
for this design.

View the  
**OPTIONS TO CONSIDER**  
on our website here.



Chat with our Building & Design Consultants  
to find out more.

			
4	2	2	2

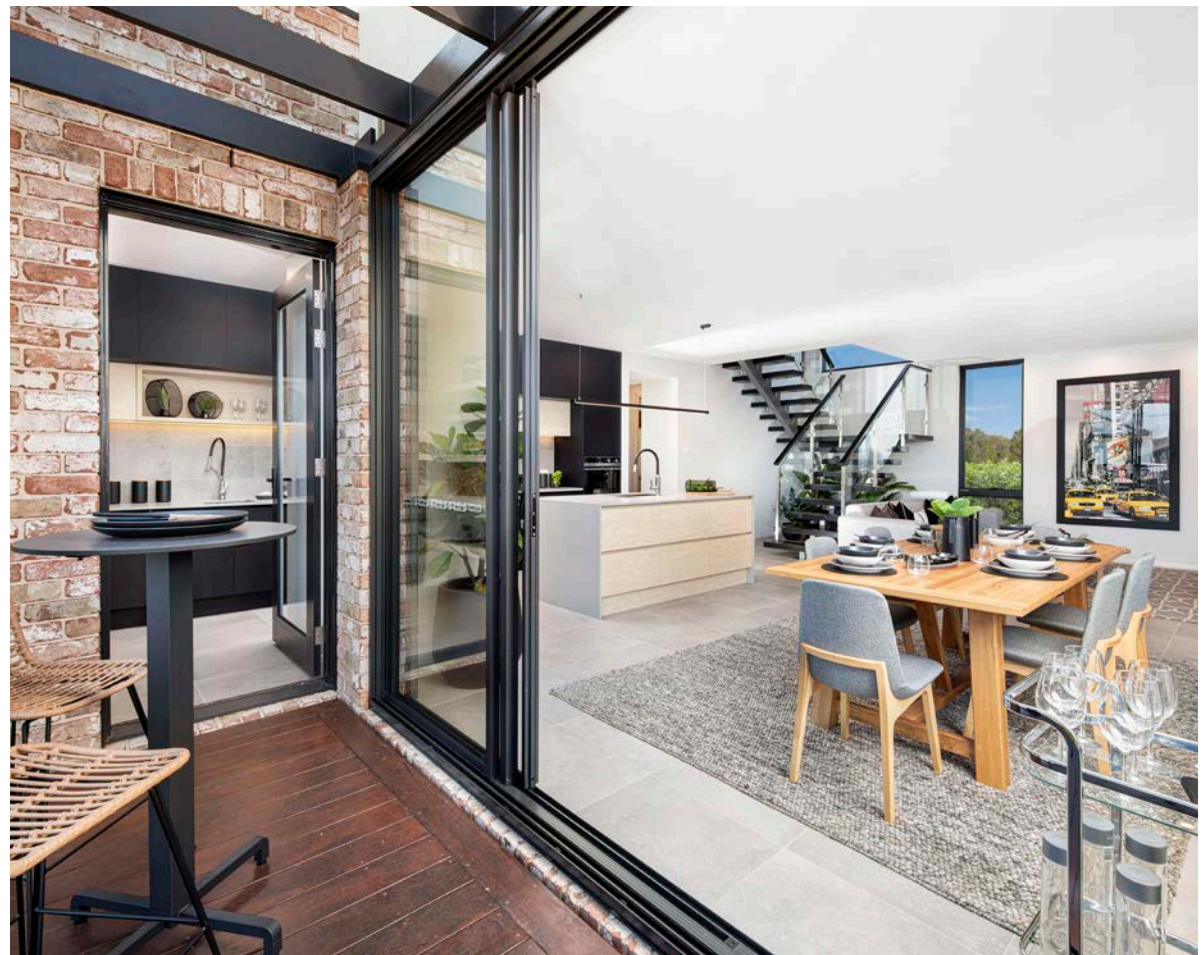
10.910m width x 14.260m length  
(not incl. Alfresco)

## Ground Floor

Family/Living/Dining	8.4 x 4.0
Home Theatre	3.4 x 4.2
Double Garage	5.5 x 5.7
Alfresco Cabana	3.0 x 3.0

## First Floor

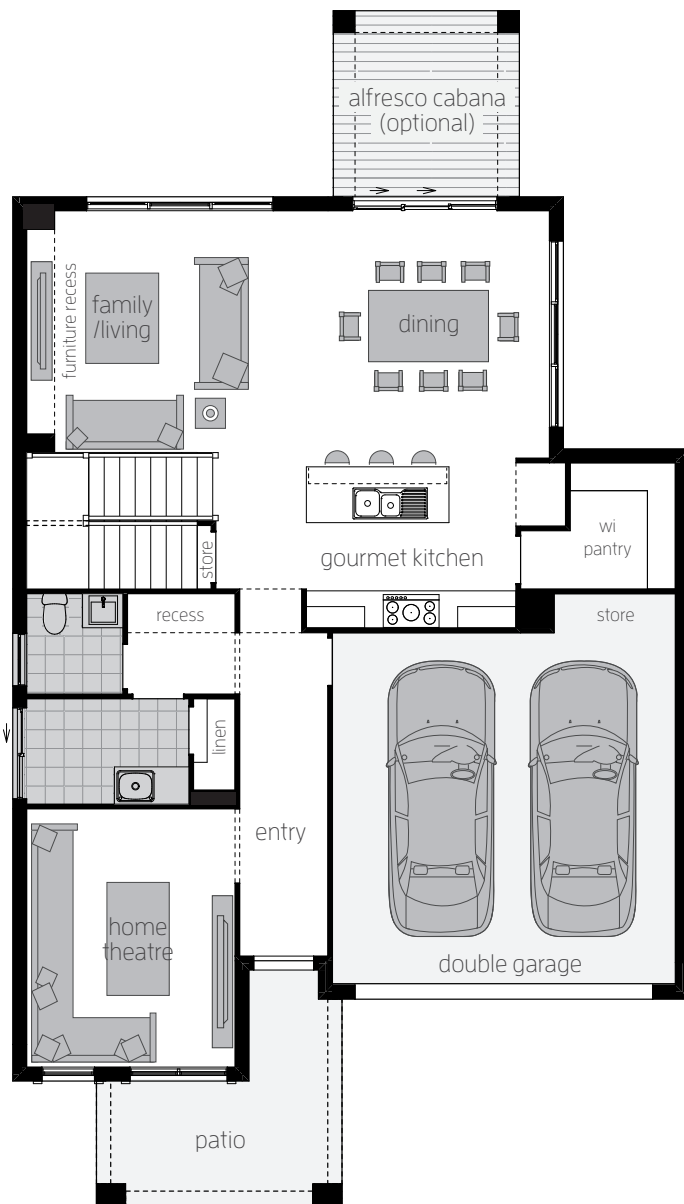
Master Suite	3.5 x 4.5
Bed 2	3.5 x 3.0
Bed 3	3.2 x 3.0
Bed 4	3.0 x 3.2



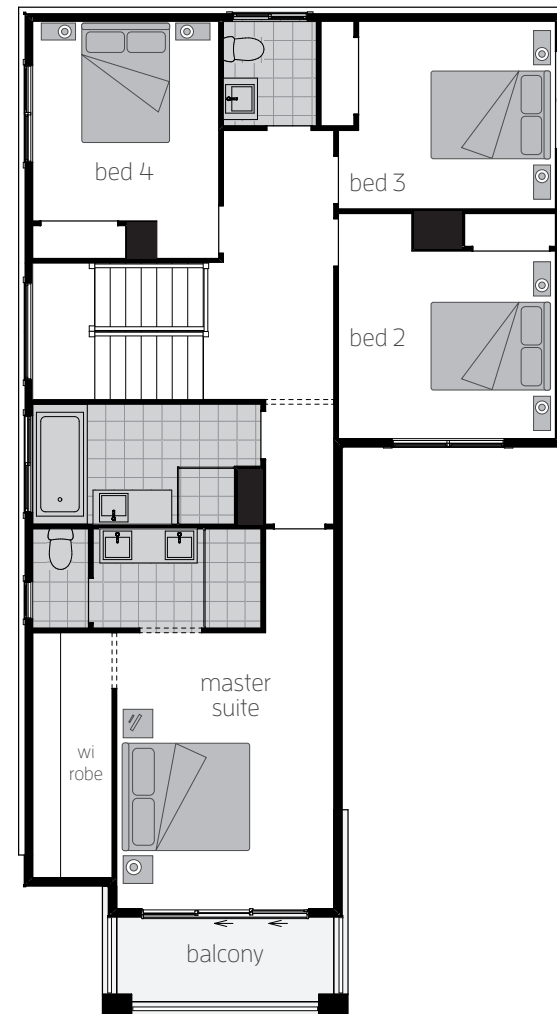
Floor plan depicts **Hampton C facade**.

Floor plans will differ slightly depending on the facade chosen. For example, window locations may differ with different facades.

**Please note:** the sizes of windows and external doors shown may vary from the standard plans due to the new 7 star BASIX requirements and the region in which you build.



GROUND FLOOR



FIRST FLOOR

# Sevilla Facades.

---





CLASSIC



HAMPTON C

Contemporary  
lifestyle elements to  
create a unique and  
aspirational home.



1300 555 382

[mcdonaldjoneshomes.com.au](http://mcdonaldjoneshomes.com.au)

Find us on     



**IMPORTANT NOTICE** Images of facades shown are a guide only. Material finishes shown are purely an expression of the artist. Please refer to our current price list and specifications for facade finishes allowed in published price. Garage doors are panel lift doors. Garage door glazing is an additional cost. Images in this brochure including actual photographs and rendered imagery may depict fixtures, finishes and features not supplied by McDonald Jones such as furnishings, internal and external fireplaces, landscaping, plants, decking, water features and swimming pools. Accordingly, published prices do not include the supply of any of these items. Images may also depict optional variations to the home design which incur additional costs such as window furnishings, window pelmets, light fittings such as pendant and down lights, front paths, driveways, fencing, barbecues, floor coverings, rendered external walls, upgrade bannisters and upgraded kitchen/bathroom layouts or finishes. Images may depict homes from other McDonald Jones design ranges and are used for illustrative purposes. Floor plans and room dimensions may differ slightly depending on your chosen facade (for example, window locations may differ with different facades). Plans are not shown to scale and all measurements are approximate only. Sliding windows may not open in direction shown. Block widths noted are approximate and suitability may vary by Council (DCP) or Housing Code (CDC) requirements. Title widths have been rounded up so some block widths required could be less. Deleting parapet walls from facades will assist in fitting your house on a lesser sized block. \*Assuming zero lot boundary. Please discuss your block requirements with our Building and Design Consultants. McDonald Jones reserves the right to modify designs or specifications without notice. For detailed home pricing, including details about the standard inclusions for the house and charges for optional variations, please talk to one of our Building and Design Consultants. NSW: McDonald Jones Homes Pty Ltd ABN 82 003 687 232 - NSW BLN: 41628 T/A McDonald Jones Homes - NSW Architect Reg No. 4234. ACT: McDonald Jones Homes (Canberra) Pty Ltd ABN 64 150 533 298 - ACT BLN: 20121296 - ACT Reg No. 2470. © McDonald Jones Homes Pty Ltd. All rights reserved. No part of this brochure may be reproduced, stored in a retrieval system or transmitted in any form or by any means without the prior written permission of McDonald Jones Homes. MCDONALD JONES TWO STOREY SEVILLA EDITION 18. 15.05.24.



**mcdonald jones**  
FIND YOURSELF AT HOME