



# Saxonvale.



**McDonald Jones**  
FIND YOURSELF AT HOME



# Saxonvale.

---

## Striking design, stylish comfort.

Stylish architectural design and perfectly balanced zones combine to create a stylish backdrop to contemporary family living in this stunning home – a testament to everything you’ve worked so hard to achieve. You’ll fall in love with the space it offers and the clever way it brings together all the elements of a two-level home demanded by a large, modern family.

The heart of the home is without a doubt the designer gourmet kitchen. Featuring a spacious walk-in pantry, expansive island bench and plenty of storage, it is the centrepiece of the open family and dining area.

Both the dining and family spaces open to the alfresco cabana, bringing the outside in, surpassing your expectations and setting the scene for many memorable get-togethers with family and friends.

To the front of the home is a comfortable living room and home office with easy access to an additional powder room.

Upstairs is the accommodation zone featuring a sumptuous parents’ retreat. Here, you can relax and unwind in this resort-style space, with its his-and-hers walk in robes and spa-inspired ensuite complementing the spacious sleeping quarters of this incredible sanctuary.

The straight forward but cleverly designed use of space on the upper level of this beautiful family home ensures the four additional bedrooms and large children’s activity sit comfortably and allow for free-flowing living. A large family bathroom and separate powder room satisfy the needs of every member of your growing family.





HAMPTON C

# Saxonvale 45.

				
5	3	1	1	2

↔ 13.100m width x 20.800m length

## Ground Floor

Family / Living	6.1 x 5.4
Dining	4.9 x 4.4
Guest Bed / Study	4.1 x 3.6
Home Theatre	4.0 x 4.5
Garage	5.8 x 6.0
Alfresco	5.1 x 4.4

## First Floor

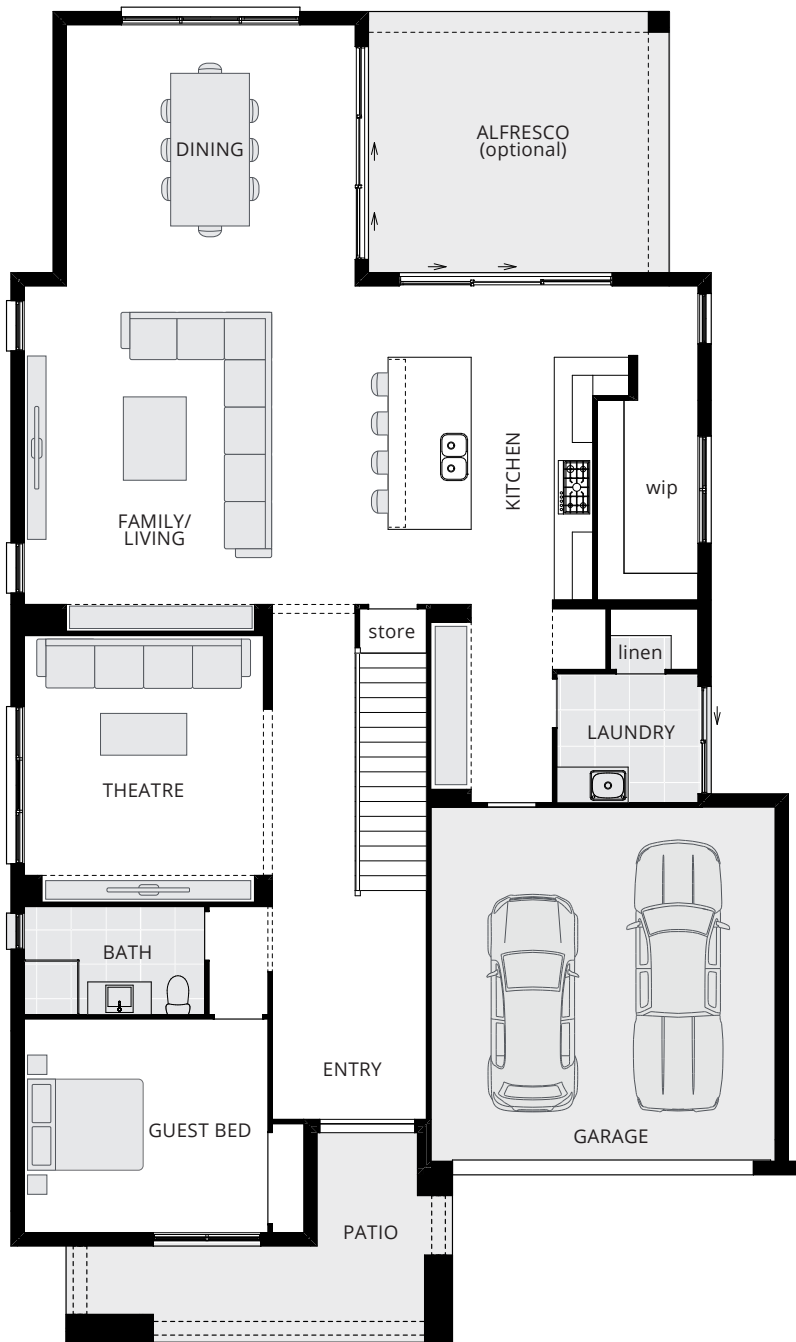
Master Suite	4.5 x 4.6
Bed 2	3.9 x 3.9
Bed 3	3.7 x 3.9
Bed 4	4.3 x 3.8
Activities	4.4 x 4.9
Study Nook	2.4 x 2.8



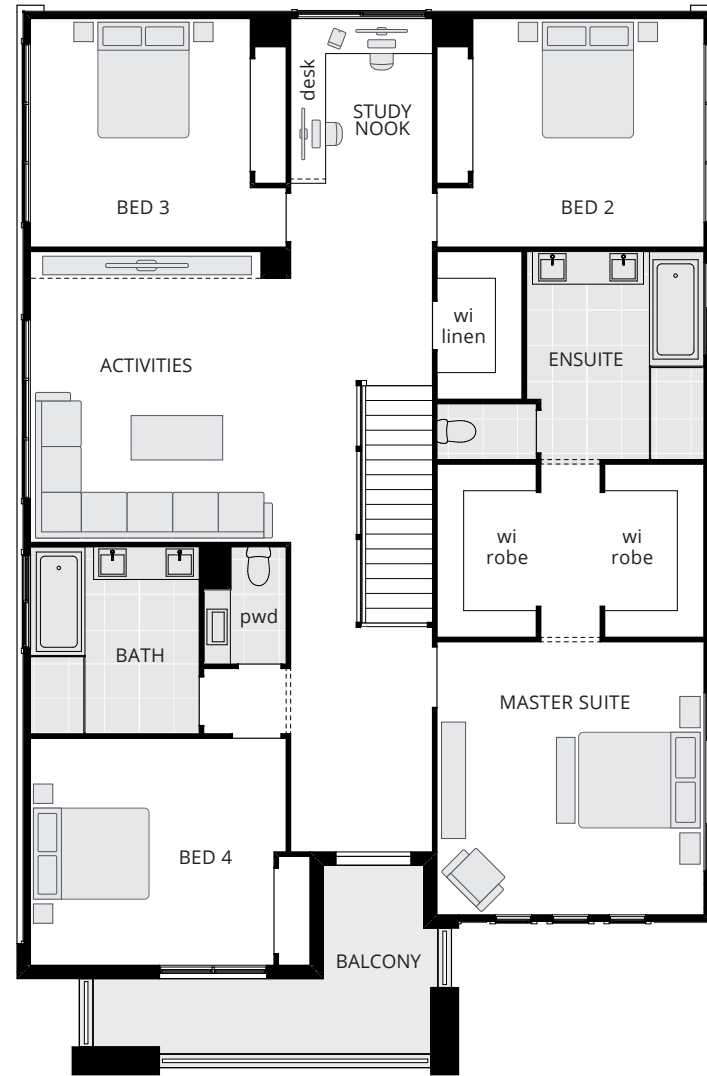
Floor plan depicts **Vantage facade**.

Floor plans will differ slightly depending on the facade chosen. For example, window locations may differ with different facades.

**Please note:** the sizes of windows and external doors shown may vary from the standard plans due to the new 7 star BASIX requirements and the region in which you build.



GROUND FLOOR



FIRST FLOOR

# Saxonvale 45.

## OPTIONS TO CONSIDER:



13.100m width x 20.800m length

### Ground Floor

Family / Living	6.1 x 5.4
Dining	4.9 x 4.4
Guest Bed / Study	4.1 x 3.6
Home Theatre	4.0 x 4.5
Mud Room	2.1 x 3.0
Garage	5.8 x 6.0
Alfresco	5.1 x 4.4

### First Floor

Master Suite	4.5 x 4.6
Bed 2	4.5 x 3.9
Bed 3	4.3 x 3.9
Bed 4	4.3 x 3.7
Bed 5	4.3 x 3.7

Floor plan depicts **Vantage facade**.

Floor plans will differ slightly depending on the facade chosen. For example, window locations may differ with different facades.

**Please note:** the sizes of windows and external doors shown may vary from the standard plans due to the new 7 star BASIX requirements and the region in which you build.

### Ground Floor

Alfresco

Alternate kitchen layout with one appliance tower

Alternate kitchen layout (not shown)

Alternate kitchen layout including butler's pantry

Alternate laundry including full length bench (for underbench wm & dryer) and overhead cupboards

Bi-fold door in lieu of window to dining

Bi-fold door to dining

Bi-fold door to kitchen

Butler's pantry (not shown)

F2118 picture window to family

Front home theatre and guest bedroom

Front home theatre and study (not shown)

Laundry bench and overhead cupboards 1600mm long (not shown)

Mudroom bench seat and drawers and o/h shelving

Stacker door in lieu of window to dining (not shown)

Open tread staircase

### First Floor

Alternate ensuite including freestanding bath

Alternate walk in robe layout including desk and sliding window

Fifth bedroom option with no activities

Fifth bedroom option with activities (not shown)

Mirrored master suite wing (not shown)

Open tread staircase

Walk in robes to bedroom 2 and 3 in lieu of study



GROUND FLOOR



FIRST FLOOR

# Saxonvale 42.

				
4	2	2	1	2

12.580m width x 19.940m length

## Ground Floor

Family	5.7 x 5.5
Living	4.1 x 4.9
Dining	4.2 x 4.1
Study	3.5 x 3.3
Garage	5.5 x 5.8
Alfresco	4.7 x 4.0

## First Floor

Master Suite	4.1 x 4.5
Bed 2	4.1 x 3.6
Bed 3	4.1 x 3.6
Bed 4	3.5 x 3.4
Activities	4.1 x 5.0

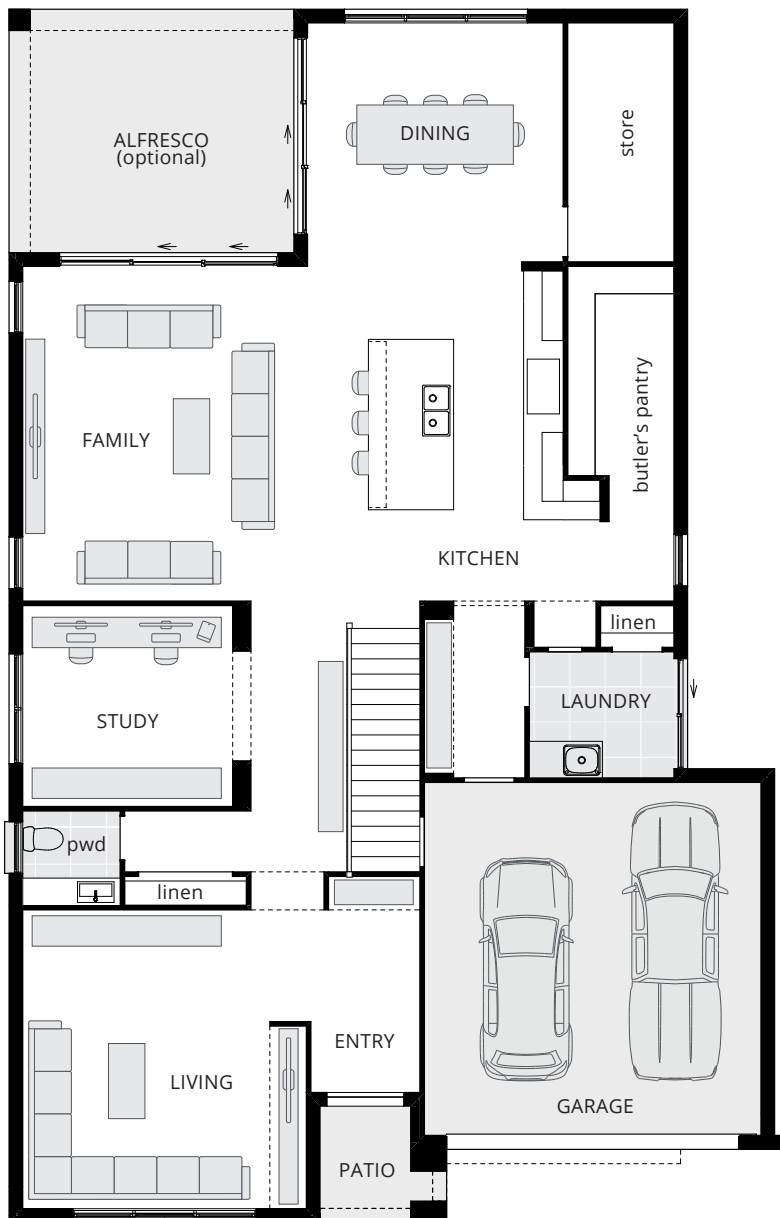


Floor plan depicts **Classic facade**.

Floor plans will differ slightly depending on the facade chosen. For example, window locations may differ with different facades.

**Please note:** the sizes of windows and external doors shown may vary from the standard plans due to the new 7 star BASIX requirements and the region in which you build.





GROUND FLOOR



FIRST FLOOR

# Saxonvale 42.

## OPTIONS TO CONSIDER:

### Upgrades

#### Ground Floor

Alfresco

Alternate kitchen a layout (refer to option plan)

Alternate kitchen 'b' layout including butler's pantry

Alternate laundry layout

Bi-fold door to dining

Bi-fold door to family

Bi-fold door in lieu of window to dining

Butler's pantry (refer to option plan)

Guest bedroom and ensuite

Laundry overhead cupboards 1600mm long (not shown)

Mudroom bench seat with drawers and coat rack over (refer to GCABI-BNCH001)

Picture window to butler's pantry

Picture window to family

Picture window to study (refer to option plan)

#### First Floor

Alternate ensuite a layout including freestanding bath (refer to option plan)

Alternate ensuite 'b' layout including freestanding bath (refer to option plan)

Freestanding bathtub to alternate Ensuite

Feature screen to ensuite (only with alternate ensuite 'b' layout) (refer to option plan)

Mirrored master suite wing (master suite to rear)

Rear master suite with alternate ensuite a layout (refer to option plan)

Rear master suite with alternate ensuite 'b' layout (refer to option plan)



Floor plan depicts **Classic facade**.

Floor plans will differ slightly depending on the facade chosen. For example, window locations may differ with different facades.

**Please note:** the sizes of windows and external doors shown may vary from the standard plans due to the new 7 star BASIX requirements and the region in which you build.



GROUND FLOOR



FIRST FLOOR

# Saxonvale 40 One.

				
5	2	2	1	2

← 12.380m width x 19.390m length →

## Ground Floor

Family	5.8 x 5.5
Dining	4.0 x 4.7
Living	4.2 x 5.1
Study	3.3 x 3.0
Double Garage	5.5 x 5.5
Alfresco Cabana	4.7 x 3.5

## First Floor

Master Suite	4.1 x 4.0
Bed 2	3.3 x 3.6
Bed 3	3.0 x 3.6
Bed 4	3.5 x 3.2
Bed 5	3.3 x 3.3
Children's Activity	4.2 x 4.9

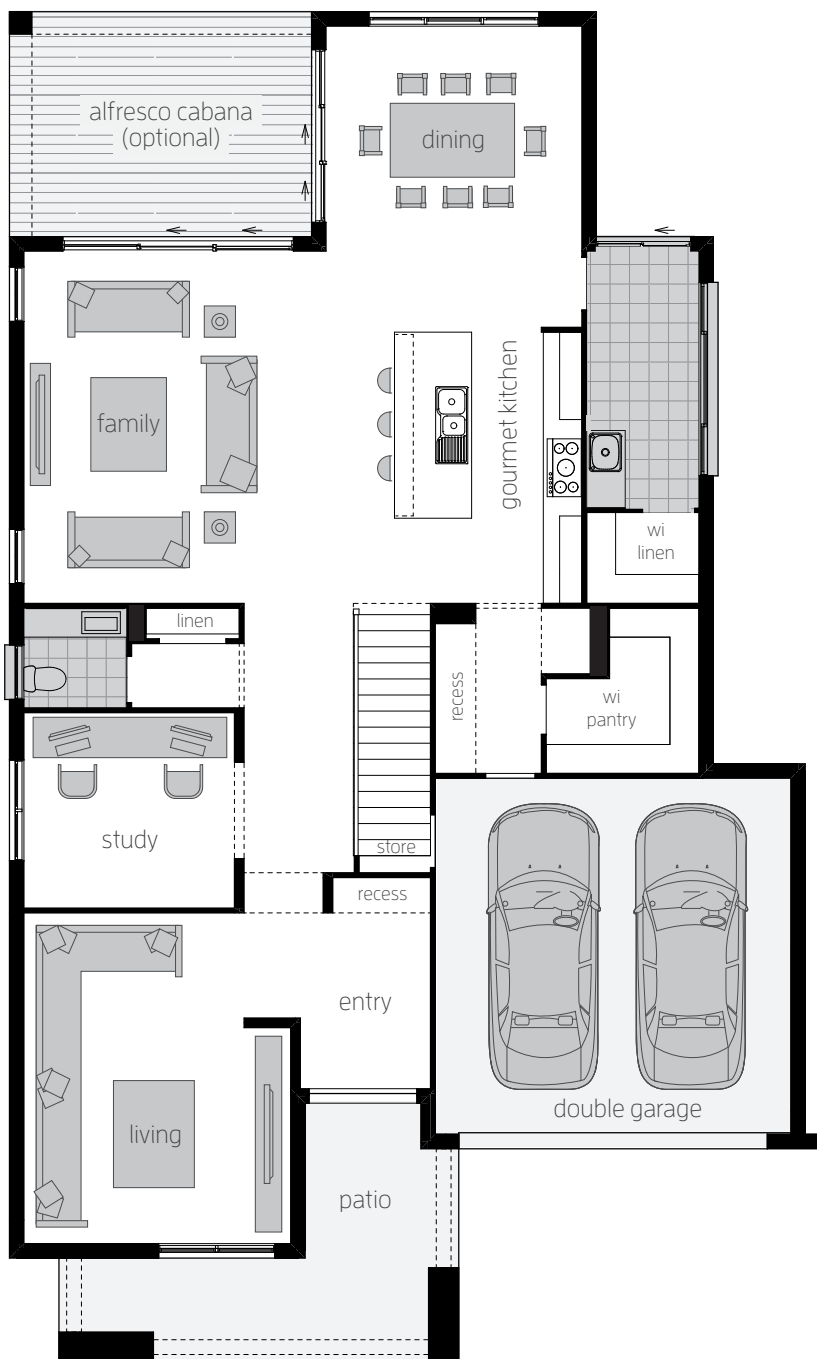


Floor plan depicts **Vantage facade**.

Floor plans will differ slightly depending on the facade chosen. For example, window locations may differ with different facades.

**Please note:** the sizes of windows and external doors shown may vary from the standard plans due to the new 7 star BASIX requirements and the region in which you build.

15m



# Saxonvale 40 One.

## OPTIONS TO CONSIDER:



12.380m width x 19.390m length

### Ground Floor

Family	5.8 x 5.5
Dining	4.0 x 4.7
Living	4.2 x 5.1
Guest Room	2.7 x 2.9
Double Garage	5.5 x 5.5
Alfresco Cabana	4.7 x 3.5

### First Floor

Master Suite	4.1 x 4.0
Bed 2	3.3 x 3.6
Bed 3	3.5 x 3.2
Bed 4	3.3 x 3.3
Children's Activity	4.2 x 4.9

### Ground Floor

Alfresco cabana 4.7m x 3.5m

Alternate kitchen layout with one appliance tower

Alternate powder room layout with shower

Bi-fold door to dining rear wall (not shown), dining side wall and family

Butler's pantry

Guest room in lieu of home office

Laundry bench with overhead cupboards

Picture window to dining rear wall

### First Floor

Alternate ensuite layout with bathtub (not shown)

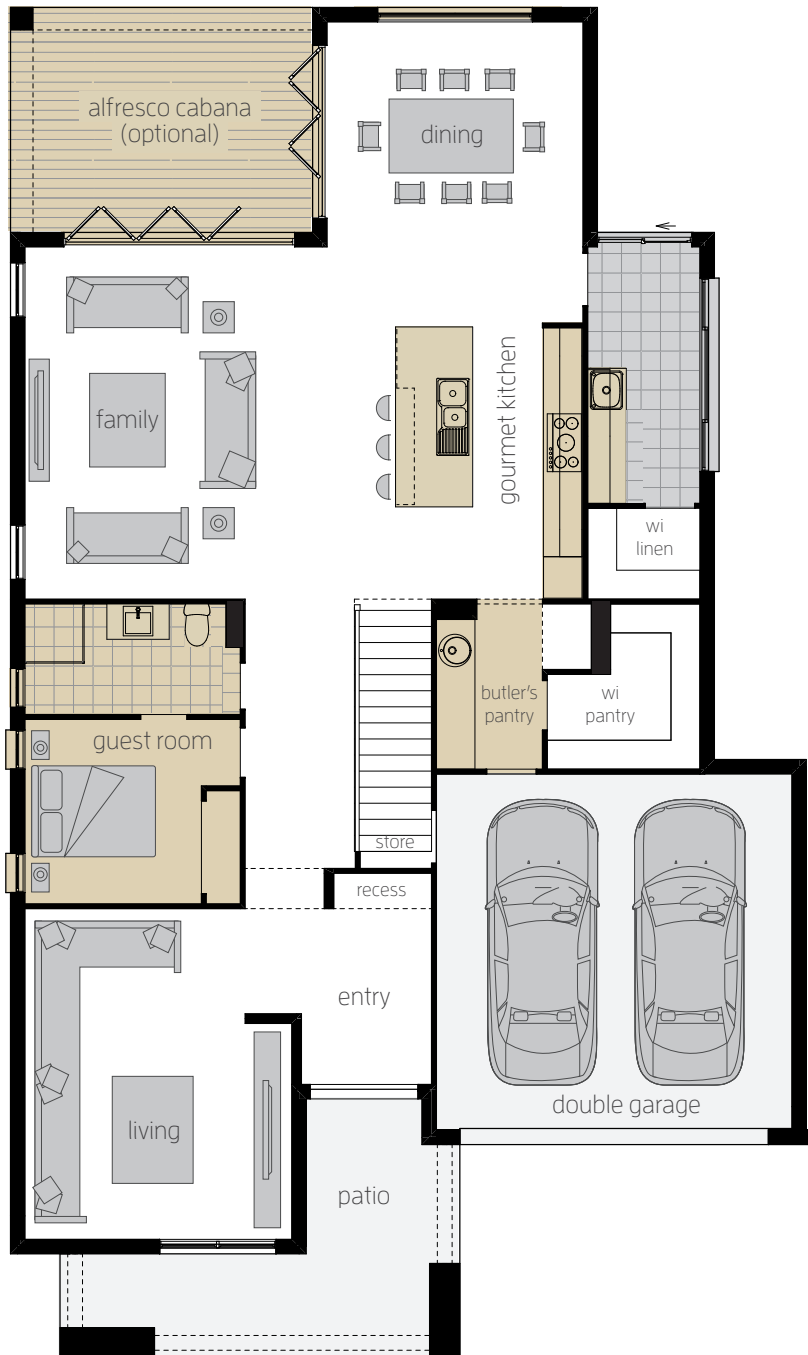
Dual ensuites in lieu of bed 3

Freestanding bathtub to alternate ensuite

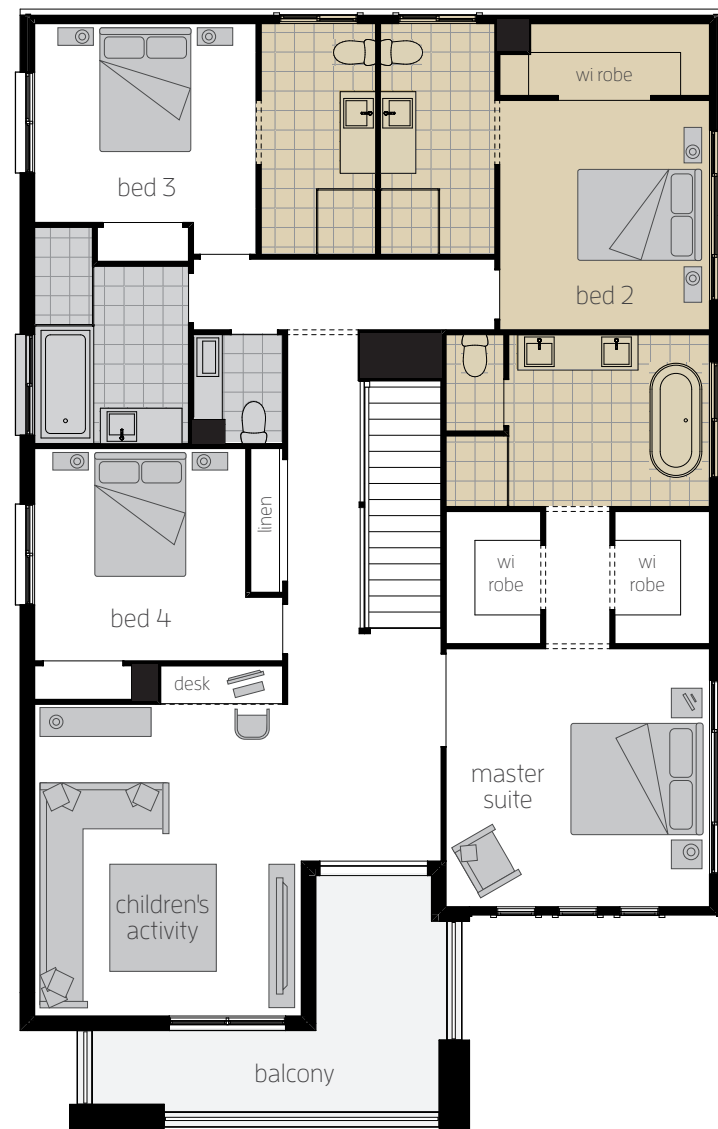
Floor plan depicts **Vantage facade**.

Floor plans will differ slightly depending on the facade chosen. For example, window locations may differ with different facades.

**Please note:** the sizes of windows and external doors shown may vary from the standard plans due to the new 7 star BASIX requirements and the region in which you build.



GROUND FLOOR

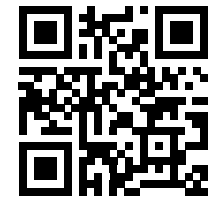


FIRST FLOOR

# Saxonvale 40 Two.

Discover more  
floorplan alternatives  
for this design.

View the  
**OPTIONS TO CONSIDER**  
on our website here.



Chat with our Building & Design Consultants  
to find out more.



12.380m width x 19.390m length

## Ground Floor

Family	5.8 x 5.5
Living	4.2 x 5.1
Dining	4.0 x 4.7
Study	3.3 x 3.0
Double Garage	5.5 x 5.5
Alfresco Cabana	4.7 x 3.5

## First Floor

Master Suite	5.1 x 4.8
Bed 2	3.5 x 3.5
Bed 3	3.9 x 3.3
Bed 4	4.1 x 3.4
Children's Activity	4.2 x 4.9

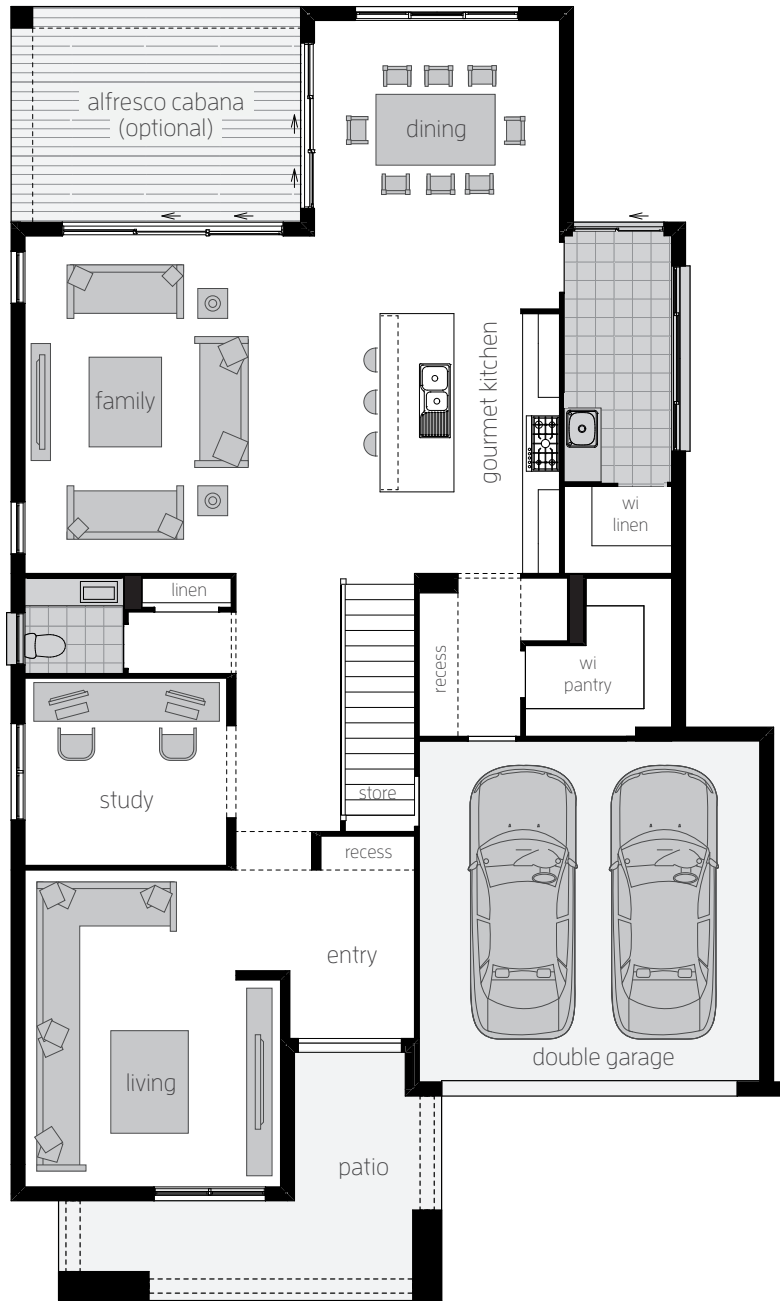


Floor plan depicts **Vantage facade**.

Floor plans will differ slightly depending on the facade chosen. For example, window locations may differ with different facades.

**Please note:** the sizes of windows and external doors shown may vary from the standard plans due to the new 7 star BASIX requirements and the region in which you build.





GROUND FLOOR



FIRST FLOOR

# Saxonvale 40 Three.

				
4	2	2	1	2

← 12.380m width x 19.390m length →

## Ground Floor

Family	5.7 x 5.5
Living	4.2 x 5.1
Dining	4.0 x 4.7
Study	3.8 x 3.0
Double Garage	5.5 x 5.5
Alfresco Cabana	4.7 x 3.5

## First Floor

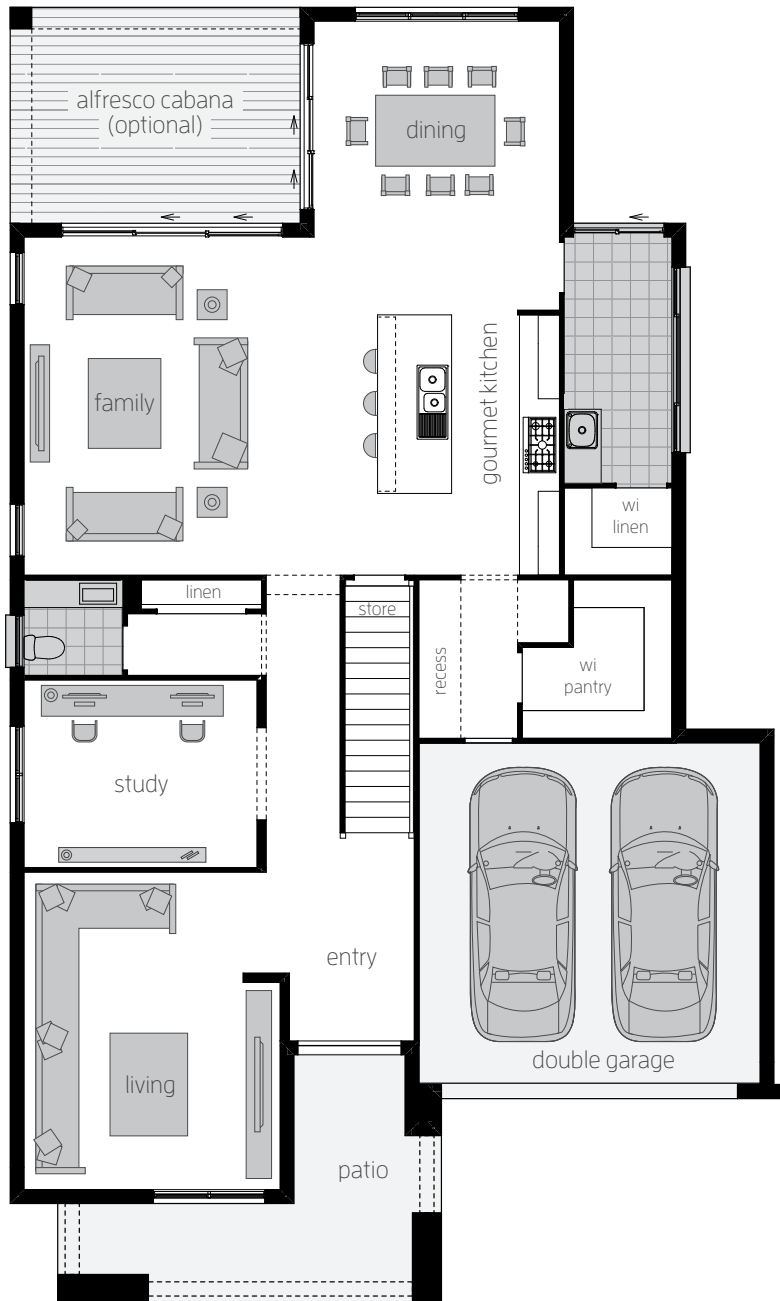
Master Suite	6.4 x 4.0
Bed 2	4.1 x 3.2
Bed 3	4.4 x 3.4
Bed 4	3.5 x 3.4
Children's Activity	4.2 x 3.5
Parent's Retreat	4.2 x 3.8



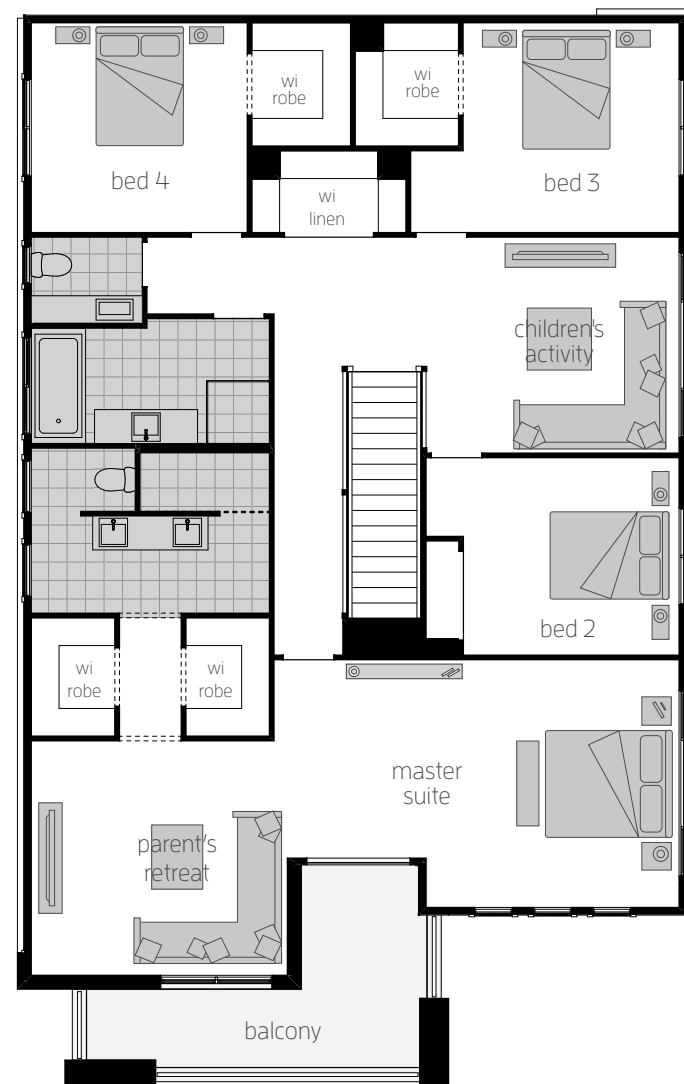
Floor plan depicts **Vantage facade**.

Floor plans will differ slightly depending on the facade chosen. For example, window locations may differ with different facades.

**Please note:** the sizes of windows and external doors shown may vary from the standard plans due to the new 7 star BASIX requirements and the region in which you build.



GROUND FLOOR

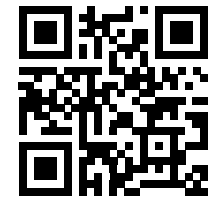


FIRST FLOOR

# Saxonvale 36 One.

Discover more  
floorplan alternatives  
for this design.

View the  
**OPTIONS TO CONSIDER**  
on our website here.



Chat with our Building & Design Consultants  
to find out more.

				
5	2	2	1	2

11.970m width x 18.440m length

## Ground Floor

Family	5.0 x 5.3
Dining	3.4 x 3.2
Living	4.2 x 4.7
Study	3.1 x 3.0
Double Garage	5.5 x 5.5
Alfresco Cabana	3.9 x 3.2

## First Floor

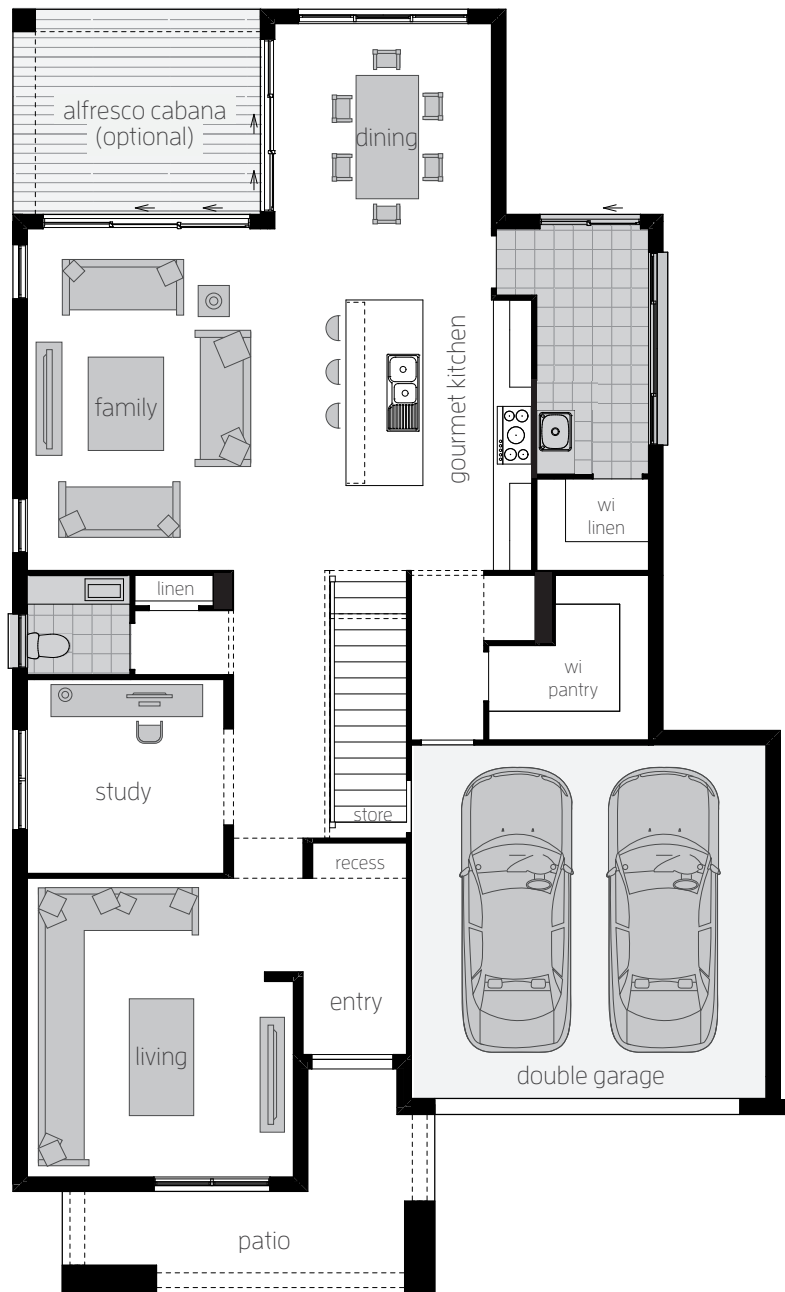
Master Suite	3.7 x 4.0
Bed 2	3.0 x 3.4
Bed 3	2.9 x 3.2
Bed 4	3.0 x 3.3
Bed 5	3.0 x 3.3
Children's Activity	4.2 x 4.0



Floor plan depicts **Vantage facade**.

Floor plans will differ slightly depending on the facade chosen. For example, window locations may differ with different facades.

**Please note:** the sizes of windows and external doors shown may vary from the standard plans due to the new 7 star BASIX requirements and the region in which you build.



GROUND FLOOR

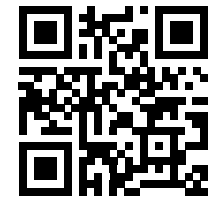


FIRST FLOOR

# Saxonvale 36 Two.

Discover more  
floorplan alternatives  
for this design.

View the  
**OPTIONS TO CONSIDER**  
on our website here.



Chat with our Building & Design Consultants  
to find out more.

				
4	2	2	1	2

← 11.970m width x 18.440m length →

## Ground Floor

Family	5.0 x 5.3
Living	4.2 x 4.7
Dining	3.4 x 4.3
Study	3.1 x 3.0
Double Garage	5.5 x 5.5
Alfresco Cabana	3.9 x 3.2

## First Floor

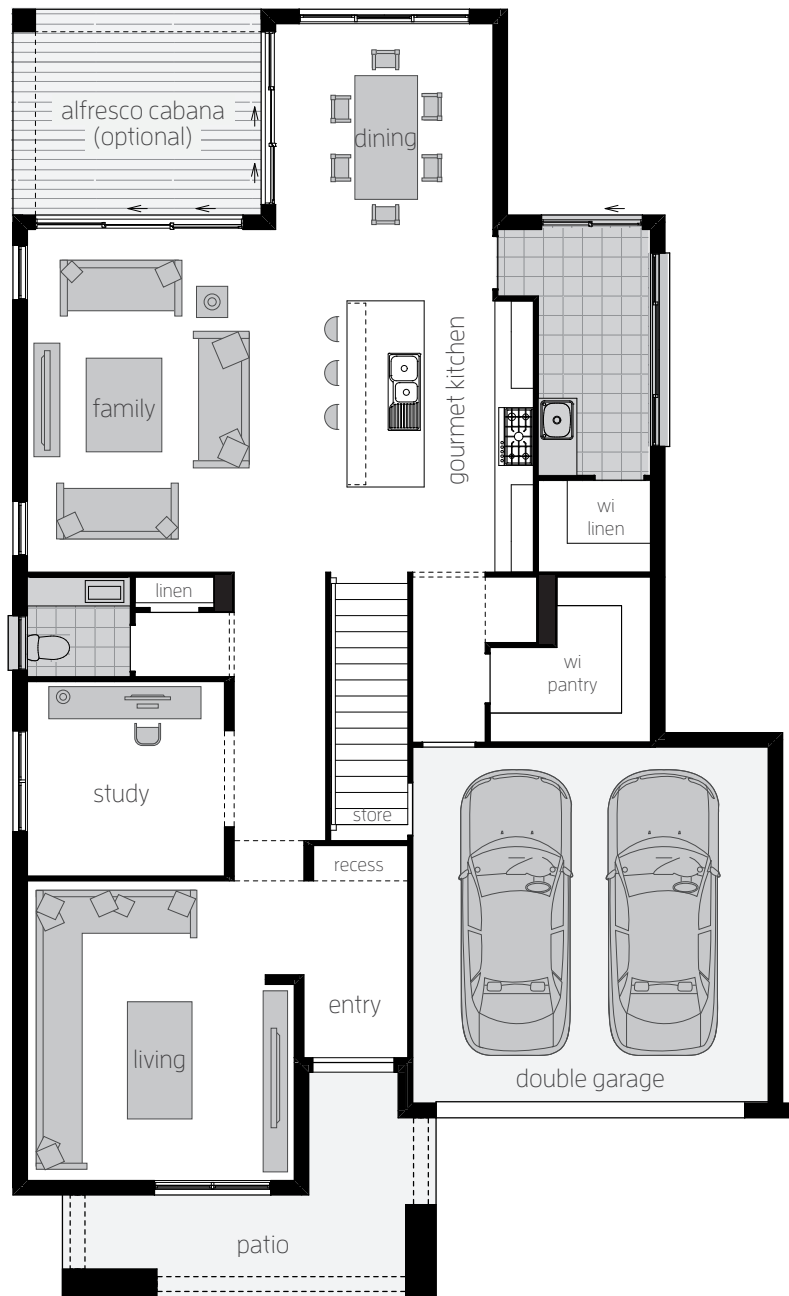
Master Suite	4.7 x 4.6
Bed 2	3.3 x 3.3
Bed 3	3.6 x 3.3
Bed 4	3.7 x 3.4
Children's Activity	4.2 x 4.0



Floor plan depicts **Vantage facade**.

Floor plans will differ slightly depending on the facade chosen. For example, window locations may differ with different facades.

**Please note:** the sizes of windows and external doors shown may vary from the standard plans due to the new 7 star BASIX requirements and the region in which you build.



GROUND FLOOR

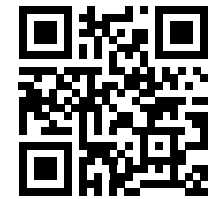


FIRST FLOOR

# Saxonvale 36 Three.

Discover more  
floorplan alternatives  
for this design.

View the  
**OPTIONS TO CONSIDER**  
on our website here.



Chat with our Building & Design Consultants  
to find out more.

				
4	2	2	1	2

11.970m width x 18.440m length

## Ground Floor

Family	5.0 x 5.3
Living	4.2 x 4.7
Dining	3.4 x 4.3
Study	3.5 x 3.0
Double Garage	5.5 x 5.5
Alfresco Cabana	3.9 x 3.2

## First Floor

Master Suite	5.5 x 4.0
Bed 2	3.7 x 3.2
Bed 3	4.3 x 3.1
Bed 4	3.5 x 3.1
Children's Activity	3.7 x 3.5
Parent's Retreat	4.2 x 3.4

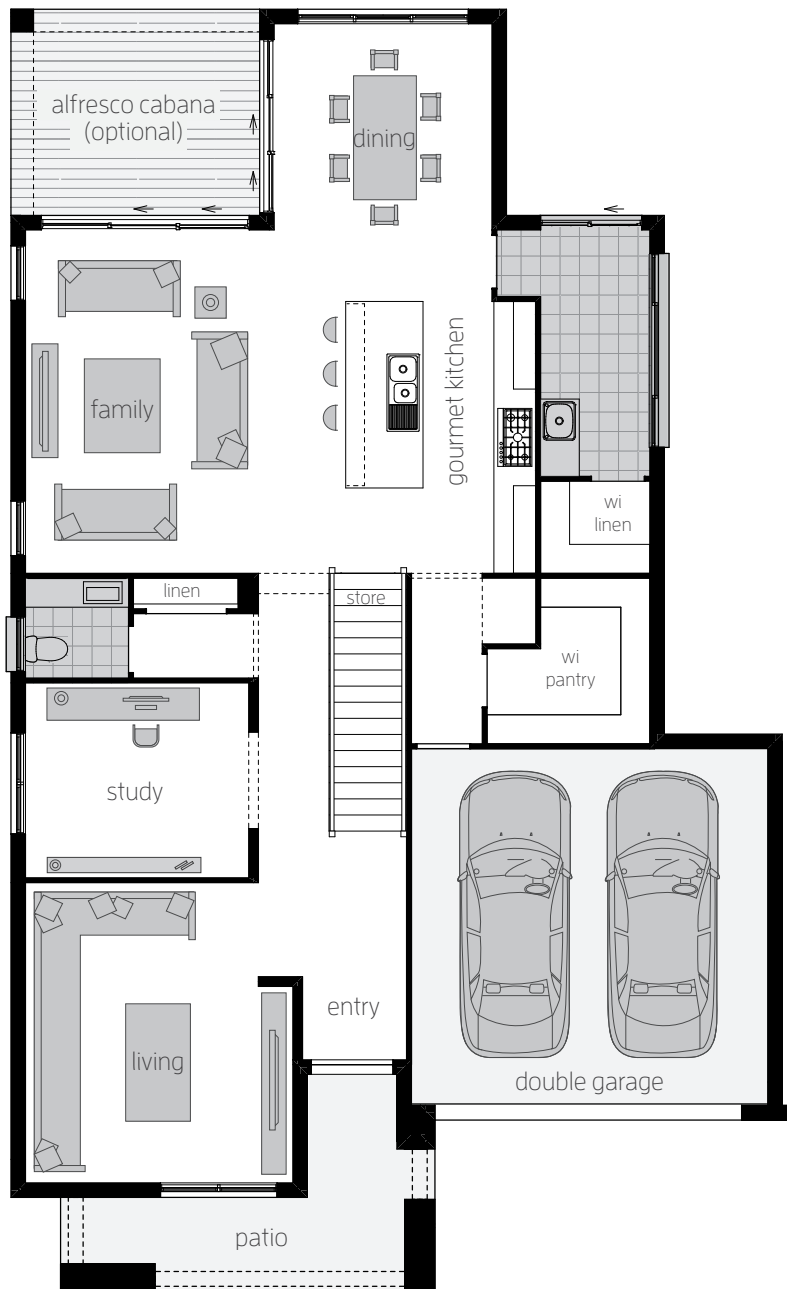


Floor plan depicts **Vantage facade**.

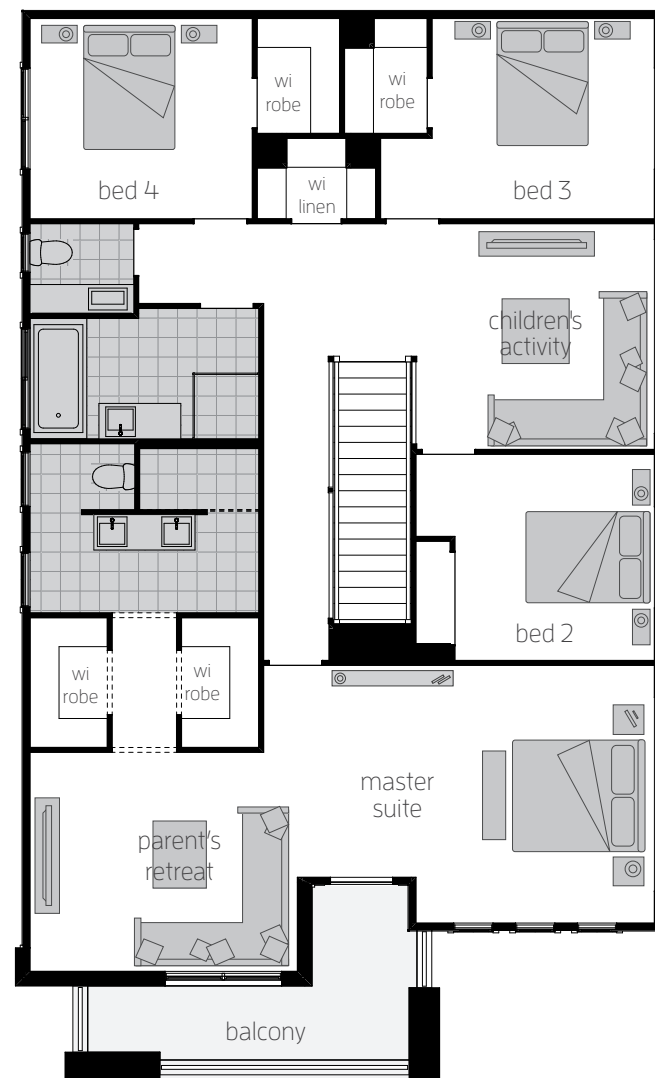
Floor plans will differ slightly depending on the facade chosen. For example, window locations may differ with different facades.

**Please note:** the sizes of windows and external doors shown may vary from the standard plans due to the new 7 star BASIX requirements and the region in which you build.





GROUND FLOOR



FIRST FLOOR

# Saxonvale Facades.

---



VANTAGE



HAMPTONS B



OSPREY



EMERSON



ALKINA

# Saxonvale Facades.

---



LANGLEY

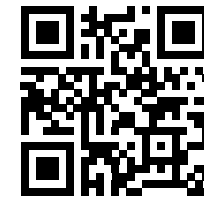


A stylish architectural design that's perfectly balanced.

# Saxonvale 33 One.

Discover more  
floorplan alternatives  
for this design.

View the  
**OPTIONS TO CONSIDER**  
on our website here.



Chat with our Building & Design Consultants  
to find out more.

4	2	2	1	2

← 10.800m width x 18.550m length →

## Ground Floor

Family	4.2 x 5.3
Living	3.4 x 5.0
Dining	3.4 x 4.2
Study	2.3 x 3.0
Double Garage	5.5 x 5.5
Alfresco Cabana	3.8 x 3.2

## First Floor

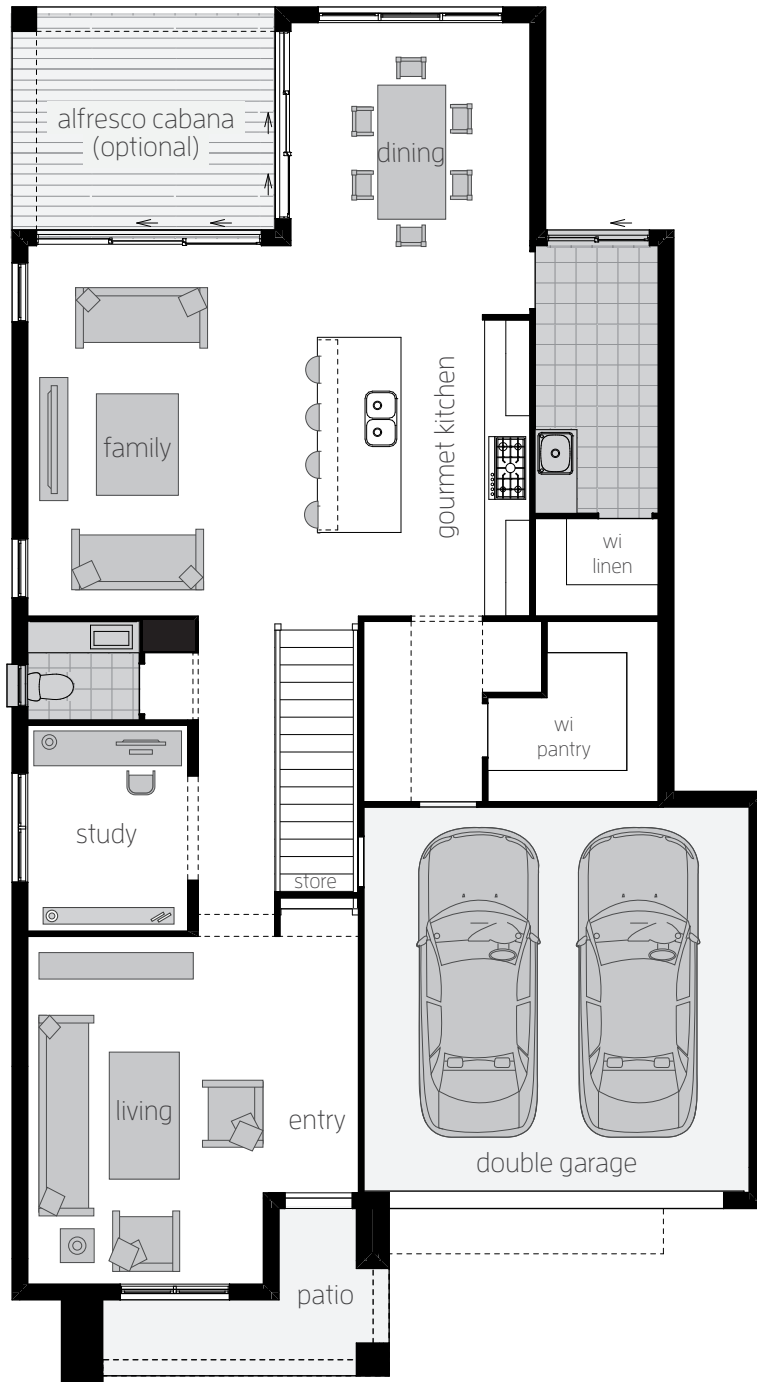
Master Suite	5.7 x 4.3
Parent's Retreat	3.4 x 3.2
Bed 2	3.1 x 3.2
Bed 3	2.9 x 3.2
Bed 4	3.1 x 3.0
Children's Activity	3.2 x 3.8



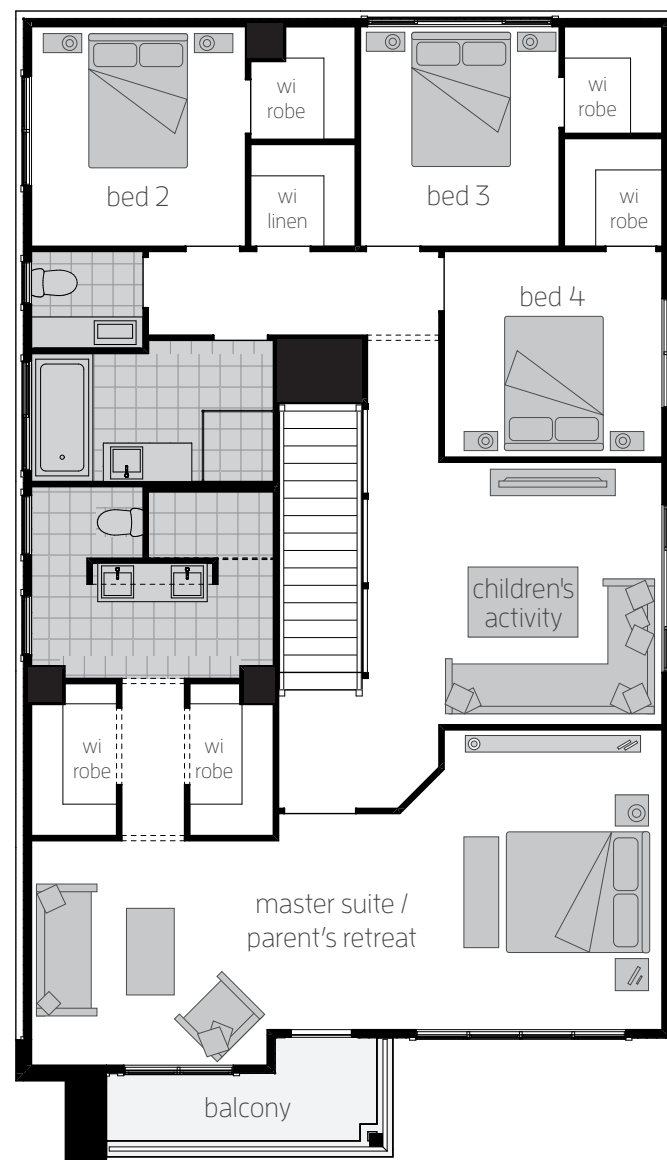
Floor plan depicts **Kuta facade**.

Floor plans will differ slightly depending on the facade chosen. For example, window locations may differ with different facades.

**Please note:** the sizes of windows and external doors shown may vary from the standard plans due to the new 7 star BASIX requirements and the region in which you build.



GROUND FLOOR

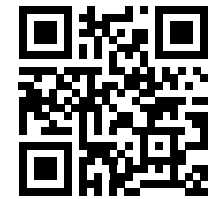


FIRST FLOOR

# Saxonvale 33 Two.

Discover more  
floorplan alternatives  
for this design.

View the  
**OPTIONS TO CONSIDER**  
on our website here.



Chat with our Building & Design Consultants  
to find out more.

				
4	2	2	2	2

10.800m width x 18.550m length

## Ground Floor

Family	4.2 x 5.3
Living	3.4 x 5.0
Dining	3.4 x 4.2
Study	2.3 x 3.0
Double Garage	5.5 x 5.5
Alfresco Cabana	3.8 x 3.2

## First Floor

Master Suite	4.5 x 3.8
Bed 2	3.5 x 3.9
Bed 3	3.4 x 3.5
Bed 4	3.1 x 3.8
Children's Activity	5.5 x 4.4
Study Nook	1.7 x 2.2



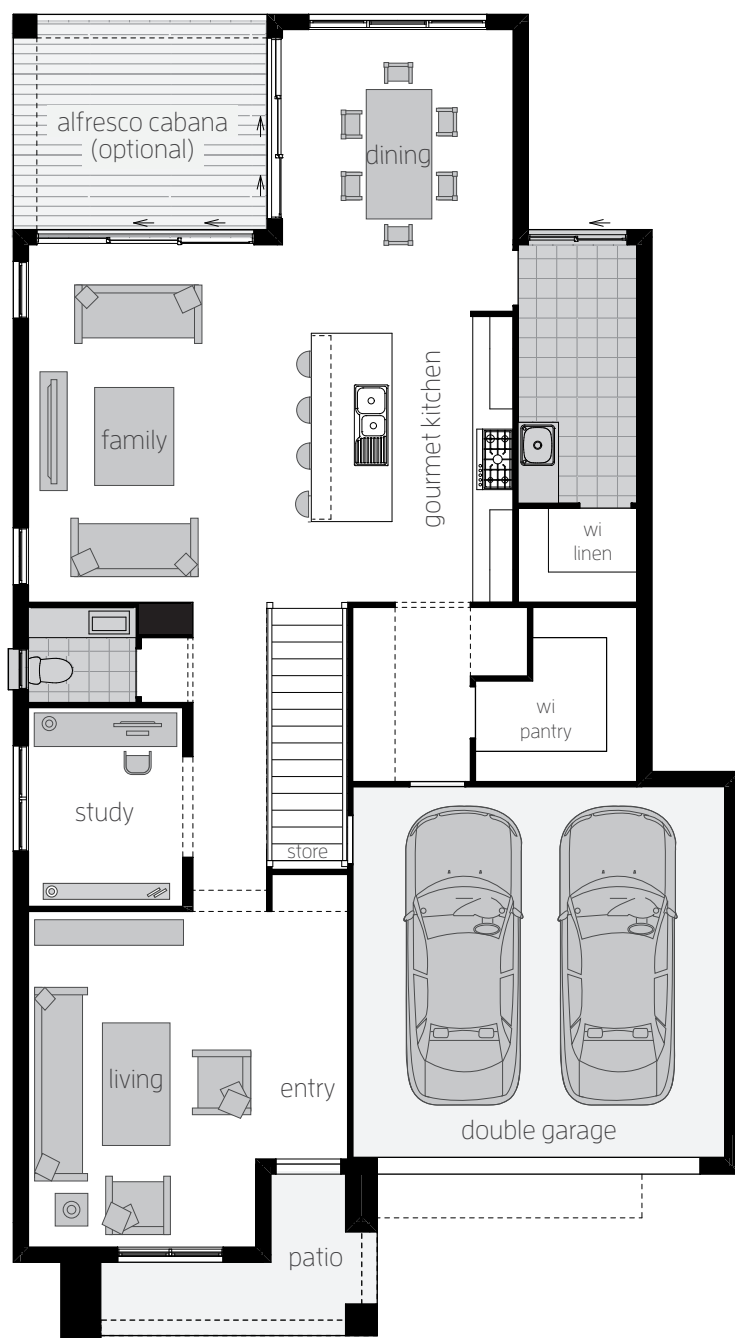
Floor plan depicts **Kuta facade**.

Floor plans will differ slightly depending on the facade chosen. For example, window locations may differ with different facades.

**Please note:** the sizes of windows and external doors shown may vary from the standard plans due to the new 7 star BASIX requirements and the region in which you build.



12.5m  
Minimum Lot Width



GROUND FLOOR

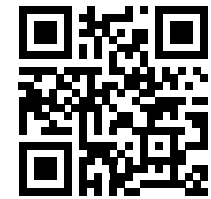


FIRST FLOOR

# Saxonvale 33 Three.

Discover more  
floorplan alternatives  
for this design.

View the  
**OPTIONS TO CONSIDER**  
on our website here.



Chat with our Building & Design Consultants  
to find out more.

				
4	2	2	1	2

10.800m width x 18.550m length

## Ground Floor

Family	4.2 x 5.3
Living	3.4 x 5.0
Dining	3.4 x 4.2
Study	2.3 x 3.0
Double Garage	5.5 x 5.5
Alfresco Cabana	3.8 x 3.2

## First Floor

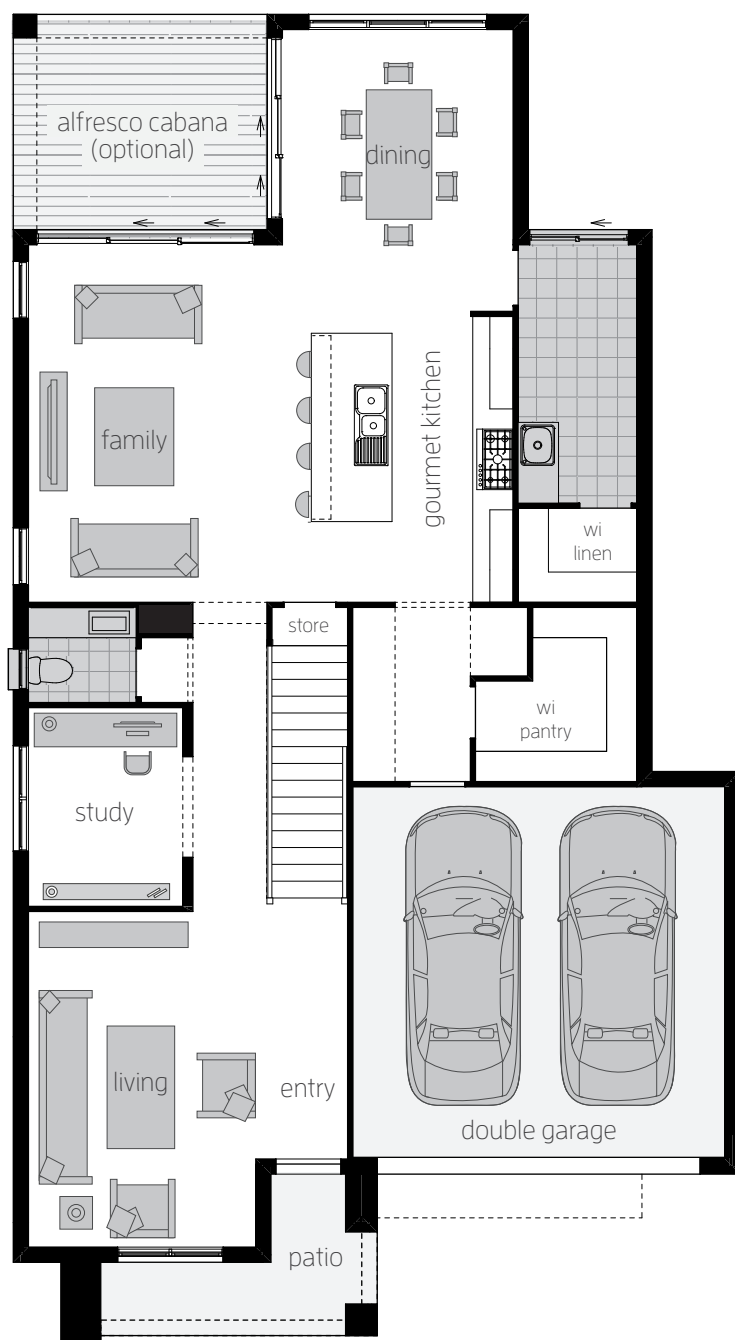
Master Suite	5.7 x 4.0
Parent's Retreat	3.4 x 3.2
Bed 2	3.1 x 3.6
Bed 3	3.5 x 3.0
Bed 4	3.5 x 3.0
Children's Activity	3.2 x 3.6



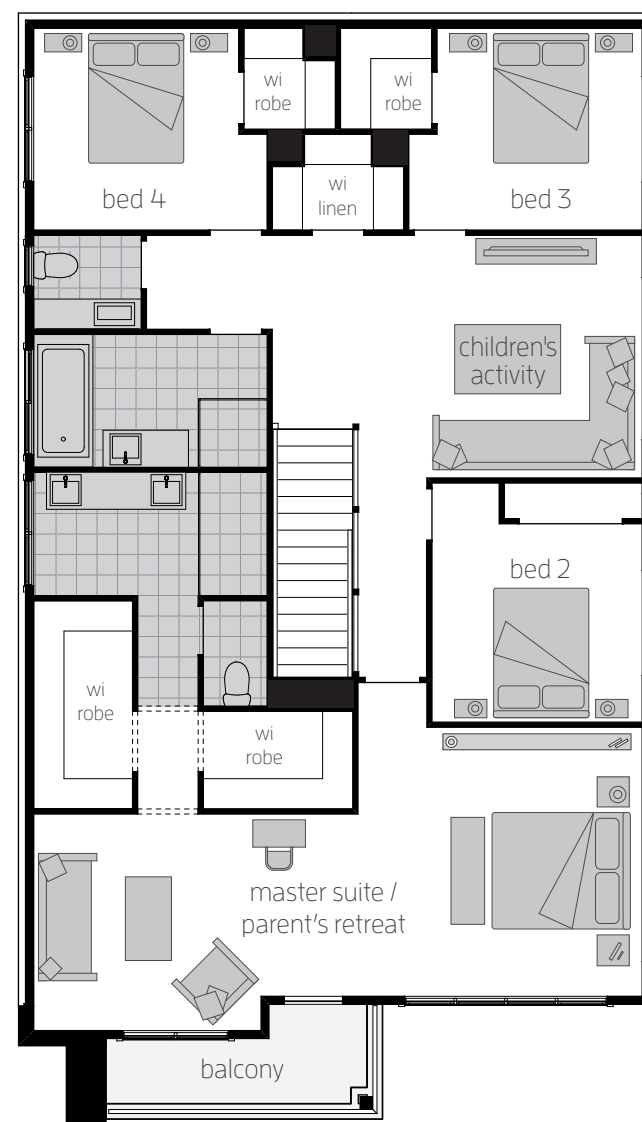
Floor plan depicts **Kuta facade**.

Floor plans will differ slightly depending on the facade chosen. For example, window locations may differ with different facades.

**Please note:** the sizes of windows and external doors shown may vary from the standard plans due to the new 7 star BASIX requirements and the region in which you build.



GROUND FLOOR



FIRST FLOOR

# Saxonvale Facades.

---





Make this a home  
you'll treasure forever.



1300 555 382

[mcdonaldjoneshomes.com.au](http://mcdonaldjoneshomes.com.au)

Find us on     



**IMPORTANT NOTICE** Images of facades shown are a guide only. Material finishes shown are purely an expression of the artist. Please refer to our current price list and specifications for facade finishes allowed in published price. Garage doors are panel lift doors. Garage door glazing is an additional cost. Images in this brochure including actual photographs and rendered imagery may depict fixtures, finishes and features not supplied by McDonald Jones such as furnishings, internal and external fireplaces, landscaping, plants, decking, water features and swimming pools. Accordingly, published prices do not include the supply of any of these items. Images may also depict optional variations to the home design which incur additional costs such as window furnishings, window pelmets, light fittings such as pendant and down lights, front paths, driveways, fencing, barbecues, floor coverings, rendered external walls, upgrade bannisters and upgraded kitchen/bathroom layouts or finishes. Images may depict homes from other McDonald Jones design ranges and are used for illustrative purposes. Floor plans and room dimensions may differ slightly depending on your chosen facade (for example, window locations may differ with different facades). Plans are not shown to scale and all measurements are approximate only. Sliding windows may not open in direction shown. Block widths noted are approximate and suitability may vary by Council (DCP) or Housing Code (CDC) requirements. Title widths have been rounded up so some block widths required could be less. Deleting parapet walls from facades will assist in fitting your house on a lesser sized block. \*Assuming zero lot boundary. Please discuss your block requirements with our Building and Design Consultants. McDonald Jones reserves the right to modify designs or specifications without notice. For detailed home pricing, including details about the standard inclusions for the house and charges for optional variations, please talk to one of our Building and Design Consultants. NSW: McDonald Jones Homes Pty Ltd ABN 82 003 687 232 - NSW BLN: 41628 T/A McDonald Jones Homes - NSW Architect Reg No. 4234. ACT: McDonald Jones Homes (Canberra) Pty Ltd ABN 64 150 533 298 - ACT BLN: 20121296 - ACT Reg No. 2470. © McDonald Jones Homes Pty Ltd. All rights reserved. No part of this brochure may be reproduced, stored in a retrieval system or transmitted in any form or by any means without the prior written permission of McDonald Jones Homes. MCDONALD JONES TWO STOREY SAXONVALE EDITION 19. 31.01.25.



**mcdonald jones**  
FIND YOURSELF AT HOME